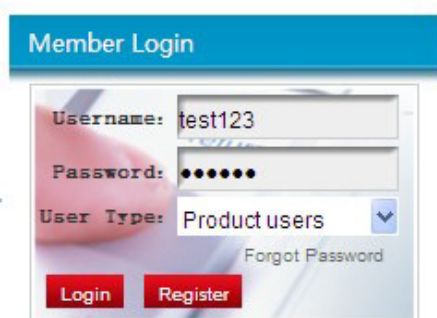


Update Procedure

Step 1.

Open website at www.carsoft.be

Login as product user



The screenshot shows a 'Member Login' form. It has a blue header with the text 'Member Login'. Below the header, there are three input fields: 'Username:' with the text 'test123', 'Password:' with ten black dots, and 'User Type:' with a dropdown menu showing 'Product users'. To the right of the 'User Type' dropdown is a link that says 'Forgot Password'. At the bottom of the form are two red buttons: 'Login' and 'Register'.

Step 2.

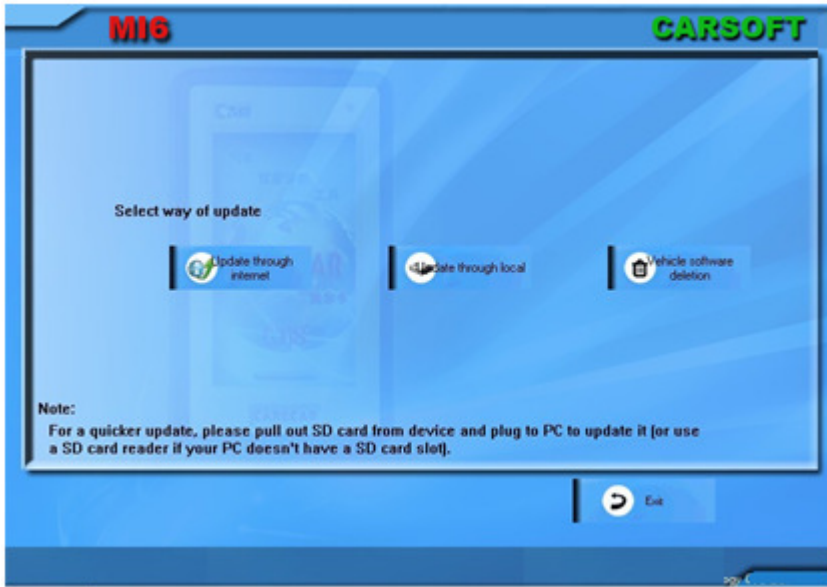
Login and download the “Update Tool” to your computer.



Step 3

Uncompress and open the “Update Tool”

Note: Please remember to connect your MI6 with computer before your open the Update Tool and **Do Not** turn on the tool.



Step 4

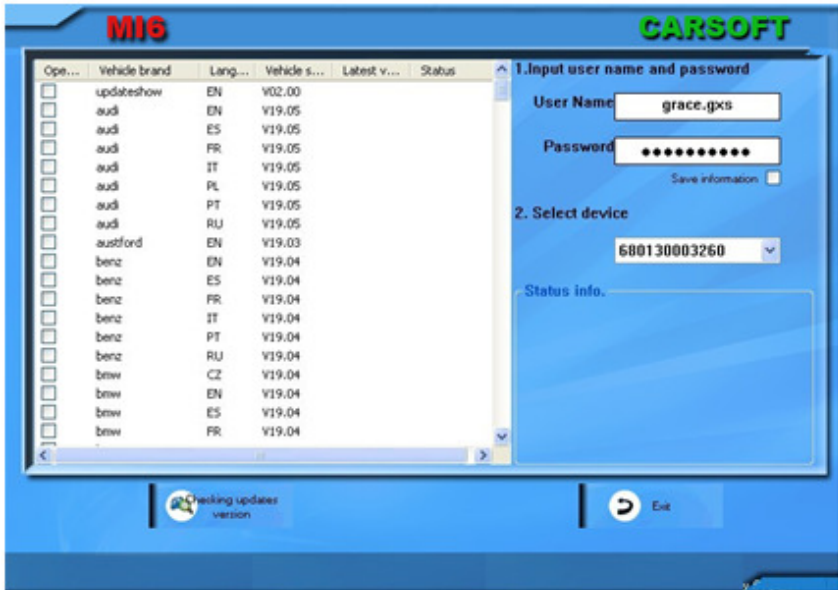
Select way of update.

Option 1----“ Update through internet”

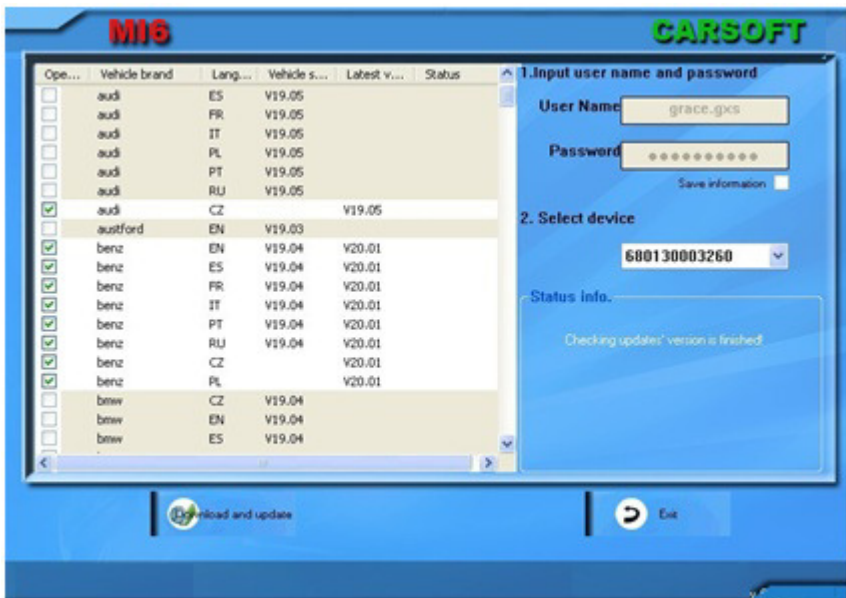
Fill in your **User Name** (as product user) and **Password** (as product user).

Note: please make sure the serial number show on the **Select device** is same as the serial number you are using. If no serial number or the serial number is not correct, please restart the update tool.

Login and it will show “**Checking Updates Versions**”, like following picture.

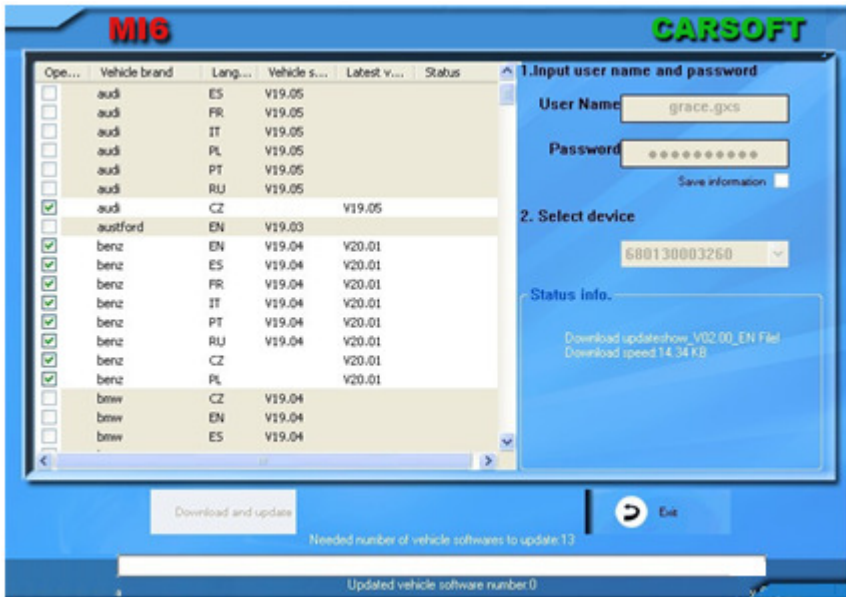


Click **“Checking updates version”** and the tool will detect the newest version software automatically.



Click **“Download and update”** and the Update Tool will upgrade software automatically.

Note: Please make sure the MI6 is well connected with your computer.



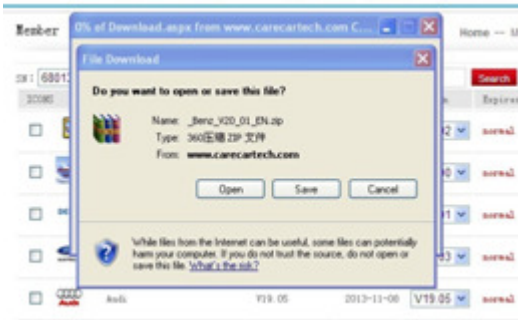
When all the software update finish, please click **“Exit”**.

Option 2 ---- “Update through Local”

If you only want to upgrade one or two software, you can download the software from our website first and then update through local computer.

Login as product user on our website at www.carsoft.be

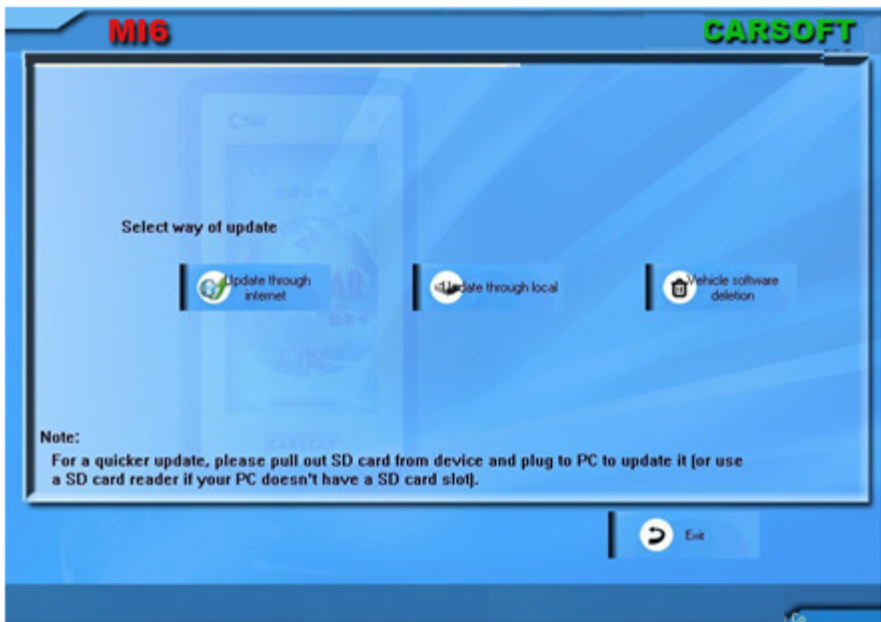
Choose the software you want to download and then click **“Download”**, like following picture.



Open **“Update Tool”** and make sure your MI6 is well connected with computer.

- Note:**
1. Do not turn on the tool.
 2. Do not uncompress the software.

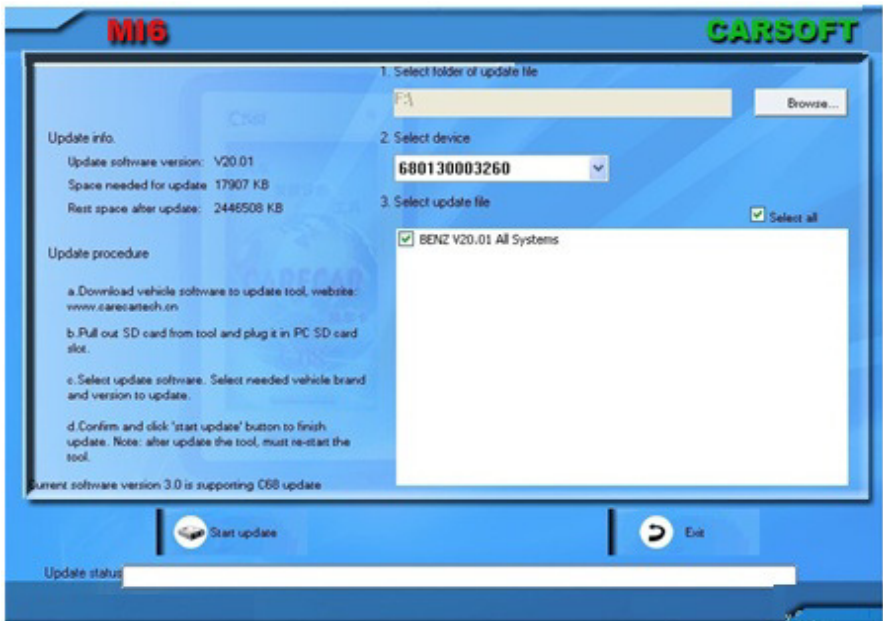
Please click **“Update through local”**



Browse and choose the downloaded file.

Note: Please make sure the serial number on **Select device** is same as the diagnostic tool you are using to upgrade.

Then the Update Tool will show your selected software and waiting to be upgraded.



Select the software and click “**Start update**”.
The Update Tool will upgrade software automatically.

Step 5

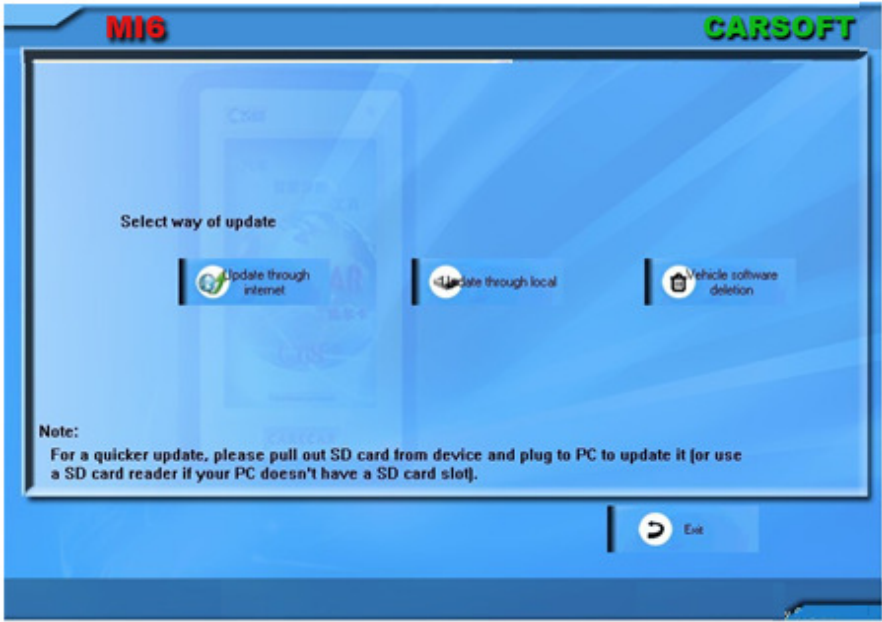
Vehicle Software Deletion

When the vehicle software quantity in your diagnostic tool is too many and it makes your working speed slower, you can choose to delete some old versions of the vehicle software.

Connect your MI6 with computer and **do not** turn on your tool.

Open the Update Tool and login as **product user**.

Choose "**Vehicle software deletion**", like following picture.

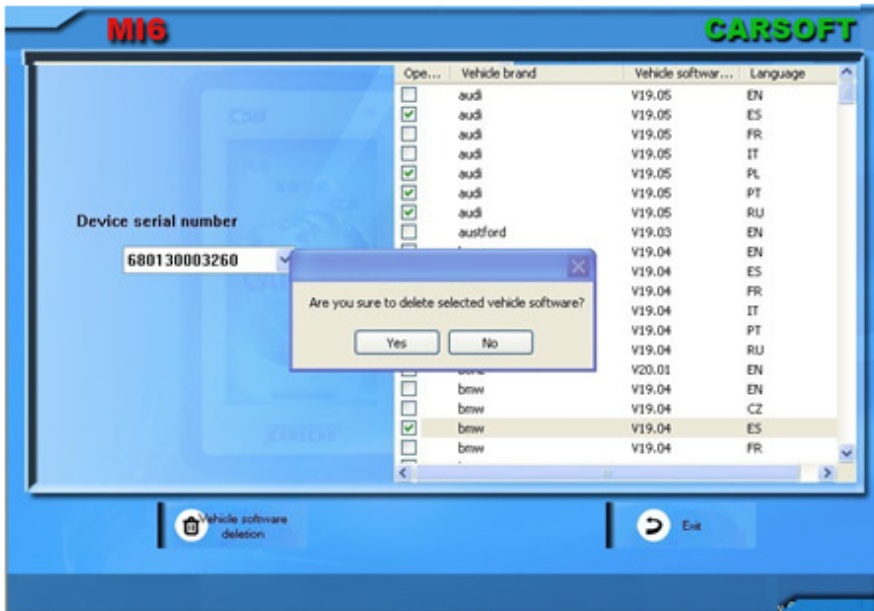


Then, it will show all the software in your diagnostic tool. Please select the ones you do not need.

And click "**Vehicle software deletion**" on the left bottom.

The tool will pop-up "**Are you sure to delete selected vehicle software?**"

Click "Yes" to delete and click "No", you can double select the software you need to delete.



After finishing, please click **“Exit”**.

Note: if you have upgraded “update show” together with vehicle software, use a USB cable to connect the tool with PC, when the MI6 is powered up, press the shortcut key in 5 seconds, the tool screen will pop a message to tell you that the tool will proceed upgrade, press [OK] to start the upgrade, the light will turn to red and in quick blink till turn to yellow and enter to start display. Upgrade finish!

Caution: During this step, do not cut off the power!

If upgrade to tool by using USB cable, please operate as follow:

Disconnect tool with PC and connect again by a USB cable.

2.3 Upgrade “Update Show”

If you want to upgrade [Update show], you must download and upgrade at least a vehicle software together with [Update show], so that it will be upgradable, otherwise it won’t be detected by the update tool if you upgrade the [Update show] individually.

3 Member Center Guidance

Enter to [Member Center], there is a row of functions.

3.1 Member information

- 1) If you want to check and modify the registration information, please click [Member information]
- 2) You can modify any information indicated there except User Name, please click [Confirm] after modification, the information will be saved successfully.

3.2 Change password

- 1) If you need change password, please click [Change password], fill in [Original password] and [New password] accordingly, click [Confirm] to save.
- 2) Please use new password when you login next time.

3.3 Add serial number

- 1) If you own several Carsoft tools, you don't need to register twice, please click [Add serial number] and fill in the tool's serial number, product password and dealer code accordingly, click [Confirm] to add successfully with a message notice.
- 2) After you add multi-serial numbers under one user, please note to select correspondent serial number of the tool to download software , or you will not be able to update the tool

2.4 Software download

- 1) If you want to update and check software information, please click [Software download], you will see software version, date and updating information etc.
- 2) User with multi-serial numbers to be notified, select correspondent serial number where indicate serial number at up-left of where all the software displayed, then download the software.